



245



245

245

[POTTER, RUPERT] AND OTHERS

Collection of 29 photographs comprising early Beatrix Potter images and family portraiture, including photos of family friends

various sizes, mostly albumen or silver prints, 26 sheets (three sheets with double images), 2 leaves laid down on card, four sheets signed "R. Potter" and three sheets with "Photographed by Rupert Potter" ink stamp, many photographs with contemporary and later captions on reverse, caption dates range between 1879 and 1884, *numerous creases, occasional tears and loss*

Subjects and locations include John Bright (photograph annotated "...I am on too low a chair and the face is not very good"), Kate Potter, John Millais, Mrs Millais, Beatrix Potter with her Governess, Beatrix and Helen Potter, Mr Gaskell, Mr and Mrs John Brett, Dalguise House, Wray Castle, Lily Langtree, Henry James, Rev. William Gaskell and Beatrix Potter. Also included in this lot is a painted silhouette of John Leech.

Rupert Potter (1832-1914) first took up photography in the 1860s when it was still a relatively new art form. He became a skilled and enthusiastic amateur photographer and was elected to the Photographic Society of London in 1869. He later contributed to several photographic exhibitions.

£1,500-2,000 €1,950-2,600

246

[POTTER, RUPERT] AND OTHERS

Collection of 95 photographs or postcards comprising houses, interiors, scenery and landscape

various sizes, mostly albumen or silver prints, a number of postcard style photographs and commercial postcards, 95 sheets, twenty-four sheets signed "R. Potter" and two sheets with "Photographed by Rupert Potter" ink stamp, many photographs with contemporary and later captions on reverse, caption dates range between 1890 and 1913, *numerous creases, occasional tears and loss*

Locations and subjects include fields behind Hill Top, Ees Wyke Sawrey, Views over Esthwaite, Windermere, Sawrey, Apples, Picture of Esthwaite Water at Castle Cottage, Coniston, Beatrix Potter at gate of Hill Top, John Ruskin's grave, fungi on a tree, Hill Top entrance hall, Hill Top farm, Beatrix Potter by a wall in Sawrey and Castle Cottage before additional rooms were built. Also included in this lot is a print of a pencil drawing by Bertram Potter and an envelope originally addressed to Rupert Potter, 2 Bolton Gardens, South Kensington.

£800-1,200 €1,050-1,550

247

[POTTER, RUPERT] AND OTHERS

Collection of 39 photographs of livestock and other animals

Various sizes, mostly albumen or silver prints, two postcard style photographs, 37 sheets (two sheets with two photographs laid down), one sheet signed "R. Potter", some images with copyright stamps on reverse, many photographs with contemporary and later captions on reverse, caption dates range between 1896 and 1931, *numerous creases, occasional tears and loss*

Subjects and locations include sheep by Sawrey old Post Office, Prize Herdwick sheep, Hill Top farm, Hill Top fields, Beatrix Potter's sheep, Hawkshead show, sheep in the snow, Lakefield, Beatrix Potter with dog (Fly?), Troutbeck, Beatrix Potter judging sheep at Grasmere, Eskdale, Benjamin Bunny and a cat who "brought up a family of blackbirds".

£1,000-1,500 €1,300-1,950

248

[POTTER, RUPERT] AND OTHERS

Collection of 11 photographs comprising early family portraiture

Various sizes, albumen or silver prints, 11 sheets, three sheets signed "R. Potter" and one sheet with "Photographed by Rupert Potter" ink stamp, all photographs with contemporary or later captions on reverse, caption dates range between 1875 and 1899, *numerous creases, occasional tears and loss*

Captions or subjects include Rev. W. Gaskell with Beatrix Potter, Helen Potter, Rupert Potter with Beatrix and Bertram and "Barrister Rupert". Locations include Dalguise, Eastwood and Lingholm.

£1,500-2,000 €1,950-2,600



246



247



248



248



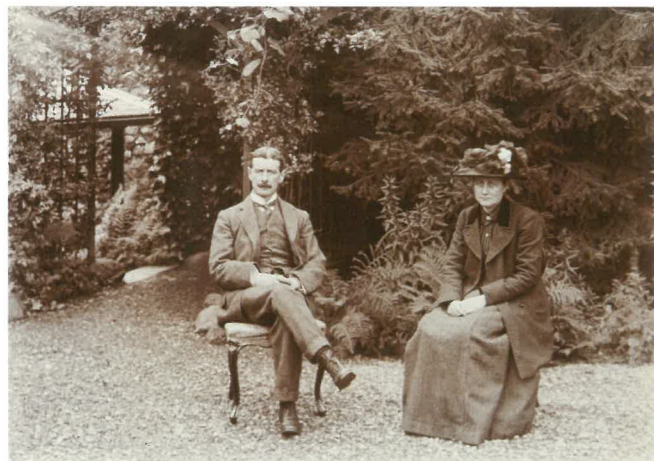
250



250



249



249

249

[POTTER, RUPERT] AND OTHERS

Collection of 14 photographs comprising later family portraiture

various sizes, albumen or silver prints, two postcard style photographs, 14 sheets, eight sheets signed "R. Potter", all photographs with contemporary or later captions on reverse, caption dates range between 1900 and 1912

The photographs comprise seven examples of Rupert, Bertram and Beatrix Potter. There are four examples of Bertram and Beatrix. There is one photograph of Rupert and Helen Potter. There are two much later photographs entitled "B' at Scout Camp!" and "H.B. Potter / Heelis Castle Cottage". Locations and dates include Eeswyke (September 1900), Lingholm (September 1904), Lingholm (September 1907), Stock Park (September 1908), Broad Lays (September 1909) and Broad Lays (September 1912).

£ 1,200-1,600 € 1,550-2,100

250

[POTTER, RUPERT] AND OTHERS

Collection of eight carte-de-visite photographs, comprising:

1) Beatrix Potter, mounted on 'A.F. Mackenzie' card; 2) Beatrix Potter, mounted on 'Mackenzie' card; 3) Rupert Potter, mounted on 'Mayson's' card; 4) Beatrix Potter with a rabbit and her cousin Alice Crompton Potter, mounted; 5) Eliza Leech, mounted on 'Netterville Briggs' card; 6) John Leech, mounted on 'Netterville Briggs' card; 7-8) Thomas Ashton [Mayor of Hyde], mounted on card (two copies); various sizes, albumen or silver prints, eight cards

The photograph of Beatrix Potter (items 1 and 2) is presented in two different versions of the same photo. It was evidently taken at the same sitting as 'Beatrix posing with a book', dated 1883, within the Lloyd Cotsen Collection (see *The Beatrix Potter Collection of Lloyd Cotsen*, California, 2004, number 123).

£ 800-1,200 € 1,050-1,550

251

KING, CHARLES

Collection of 15 photographs, mostly taken by Charles G.Y. King, comprising:

1-2) Beatrix Potter in doorway at Hill Top Farm (2 copies); 3-5) Beatrix Potter with Kep (3 copies); 6) Beatrix Potter watching ducklings (1 copy); 7-12) Beatrix Potter with V.J. King (standing) (6 copies); 13) Beatrix Potter with Mrs Alcock Beck (1 copy); 14) Beatrix Potter with Mrs Alcock Beck (both standing) (1 copy); 15) autograph letter signed ("C.G.Y. King") to Beatrix Potter presenting photos and noting "it is a great pleasure to me to have had the opportunity of taking these photos", together with envelope (4to, Newcastle on Tyne, 4 July 1913, 1 page); 16) Kep lying by door (1 copy)

Items 1 to 14 were all probably taken by Charles G.Y. King in 1913. They include the famous image of Potter standing by the doorway at Hill Top Farm. Of the photo taken with ducklings, Potter wrote "I am much amused with six little ducks waddling about the garden... They rush for presents of worms and caterpillars" (see Judy Taylor's *Beatrix Potter*, London, 1986, p. 127). It appears that King sent copies of his photographs during July 1913. In the envelope for that letter Potter also kept a photograph of her favourite collie, Kep. She annotated the envelope "Only picture I have of Kep. Taken by some visitors - American?" Given that Charles King sent a photograph of her seated with Kep, Potter was evidently mistaken in the number of photos of the dog. This lot also includes a letter from Joan Duke and a photocopy of a newspaper cutting providing some background.

£ 1,000-1,500 € 1,300-1,950

252

PULLMAN, PHILIP

Collection of 25 volumes, mostly inscribed or signed, 1995-2010, comprising:

Northern Lights. *Scholastic*, 1995, first edition, presentation copy inscribed by the author "My best wishes to Eileen - | Philip Pullman | 12 Nov. 98", original boards, dust-jacket (Carnegie Medal sticker present); *The Firework-Maker's Daughter*. *Doubleday*, 1995, first edition, presentation copy inscribed by the author "With greetings to Eileen - | Philip Pullman", original pictorial boards, ownership signature laid-down on label; *Clockwork*. *Doubleday*, 1996, first edition, presentation copy inscribed by the author "With greetings to Eileen - | Philip Pullman | 15 Nov. 96", original pictorial boards; *The Subtle Knife*. *Scholastic*, 1997, first edition, presentation copy inscribed by the author "To Eileen, with | greetings - | Philip Pullman | 12 Nov. 98", original boards, dust-jacket; together with 21 others (listed on www.sothebys.com); mostly 8vo

See catalogue note at SOTHEBYS.COM

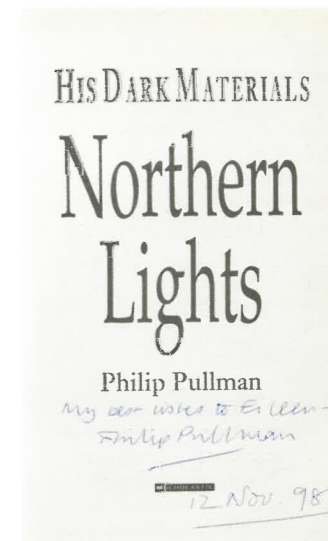
£ 1,200-1,600 € 1,550-2,100



251



251



252