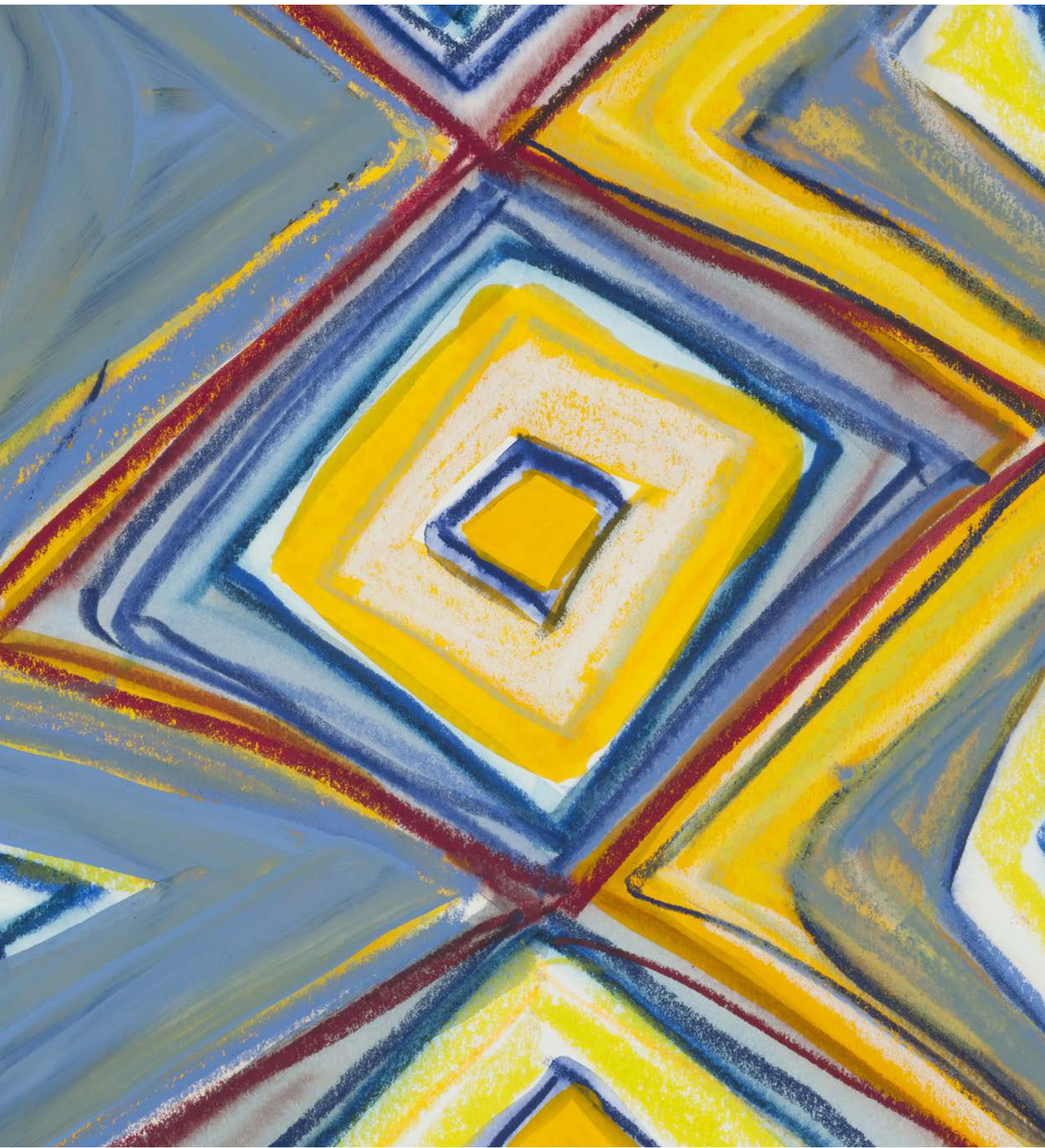


PREVIEW WEST BUND 2023

GALERIE THOMAS SCHULTE | BOOTH B320
09^{TO} 12 NOVEMBER 2023



MARINA ADAMS SOLO PRESENTATION

During the 10th edition of West Bund Art & Design, Galerie Thomas Schulte is delighted to be showing a solo presentation by the artist with recent paintings and drawings.





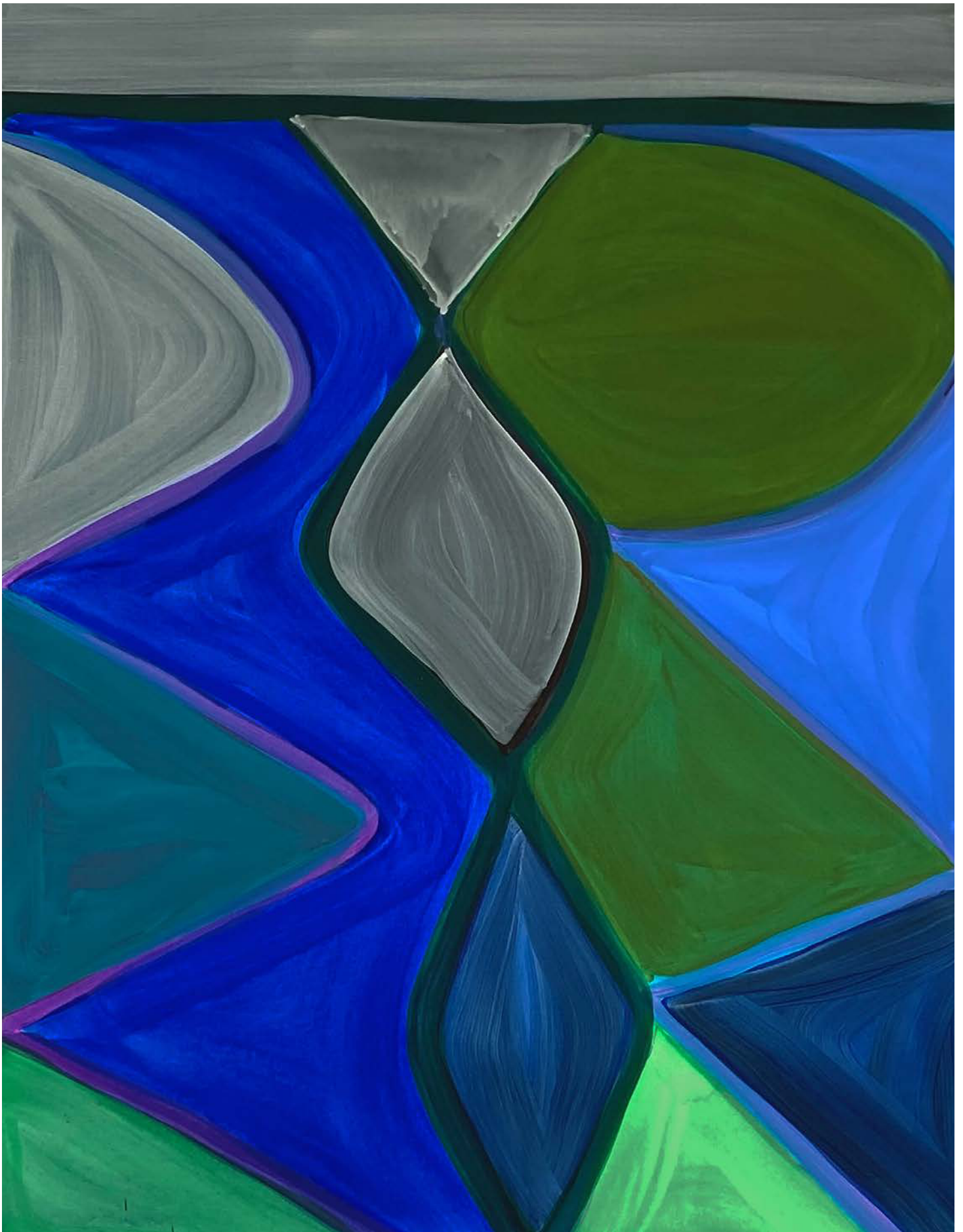
Another Tongue, 2023
Acrylic on linen
172.7 × 147.3 cm | 68 × 58 in

Marina Adams' loose composing of color and line opens up richly evocative constellations that are both alive with energetic fluctuations and pared down spaces of quiet reflection. Rather than a concrete form, what is shared among the works is an appearance of slow growth, or unfurling, conveyed by criss-crossing lines, repeated verticals and stacked shapes—reminiscent of links in a chain, accordion folds, rising columns, or even ancient symbols. Although vertical in orientation and movement, there is a horizontal tension that tugs at them, as though opening them up. A central, linear structure arranges electric color in loose geometries that attain new expressivity with each iteration. The lines do not so much separate color planes as tie them together into a whole that is completely at ease with its idiosyncrasies, irregularities, and nuances.



Sing Your Power, 2023^{.not}_{def}
Acrylic on linen
101.6 × 76 cm | 40 × 30 in^{.not}_{def}





greengreenblue, 2022^{.not}_{def}
Acrylic on linen
101.6 × 76 cm | 40 × 30 in^{.not}_{def}





Color Code II, 2023
Acrylic on linen
172.7 × 147.3 cm | 68 × 58 in



Alongside the canvases, a series of small crayon drawings—studies of sorts—take on a character of their own. The linear structure found in the paintings achieves greater angularity here. Lines vibrate intensely, wavering like strummed guitar strings. Color is more sparingly applied in most, but vibrant nonetheless, echoing the striking colorations of Adams' paintings. In both, a sense of fluidity is enhanced by moments of translucency, overlap, drips and slippage—a wateriness that corresponds to the wavy lines moving vertically across the surface, at times jagged and at times soft. Oscillations in shade and intensity consequently open color spaces that are neither flat nor impenetrable.

We experience Adams' work, its rhythms, as an ebb and flow—like bodies gently and continuously expanding and contracting with breath. Resonances are carried through slow transformations, as the fluid, gestural forms take root and branch out. What we encounter is familiar, if loosely defined: at the edge of something, as though between waking and dreaming—on the tip of the tongue.



Crayon Drawing 18, 2022

Crayon on paper

35.5 × 28 cm | 14 × 11 in

Framed: 49 × 41 × 3 cm | 19 1/4 × 16 1/8 × 1 1/8 in ^{not}_{def}

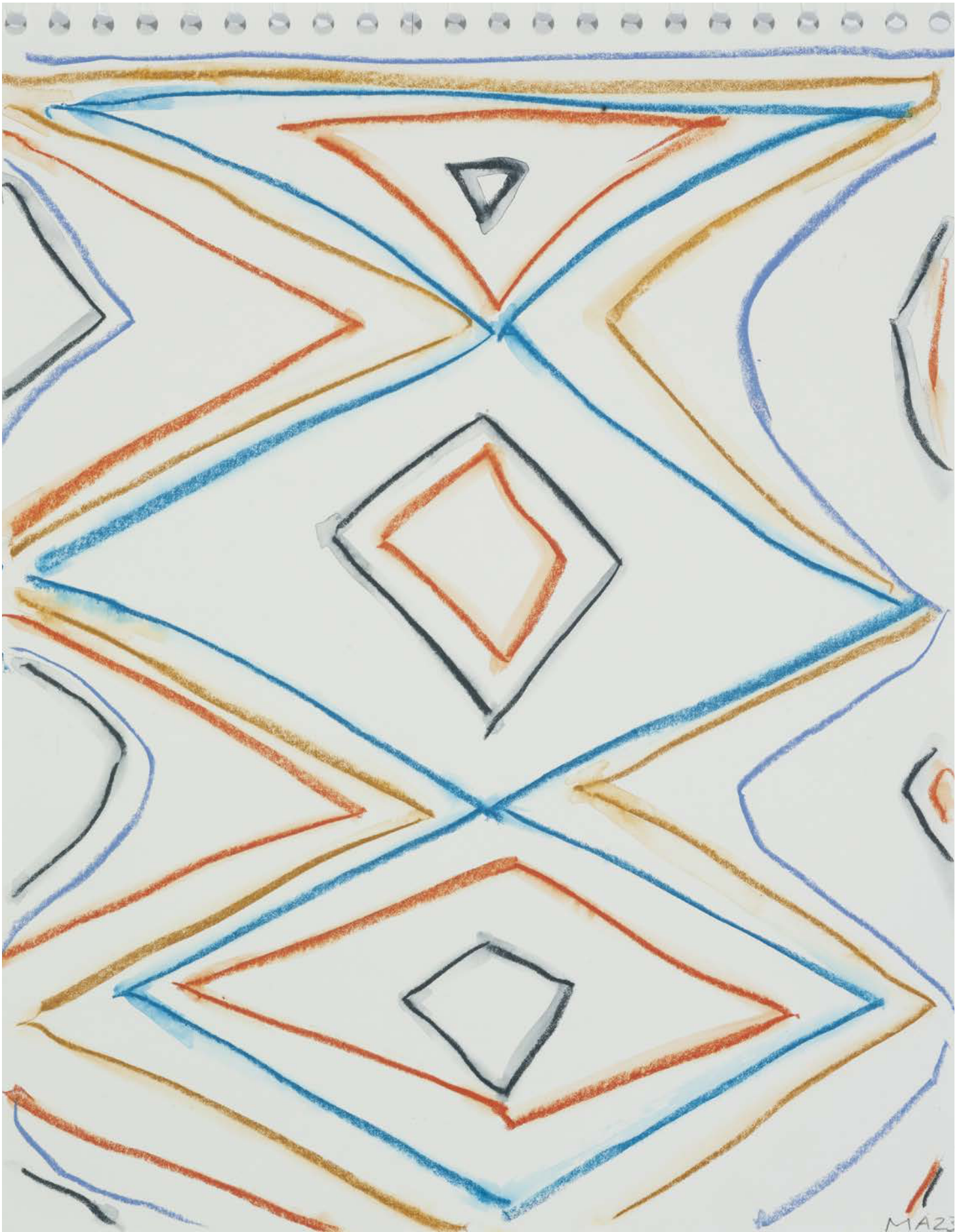


Crayon Drawing 4, 2022

Crayon on paper

35.5 × 28 cm | 14 × 11 in

Framed: 49 × 41 × 3 cm | 19 1/4 × 16 1/8 × 1 1/8 in ^{not}_{def}



Crayon Drawing 13, 2022

Crayon on paper

35.5 × 28 cm | 14 × 11 in

Framed: 49 × 41 × 3 cm | 19 1/4 × 16 1/8 × 1 1/8 in ^{not}_{def}

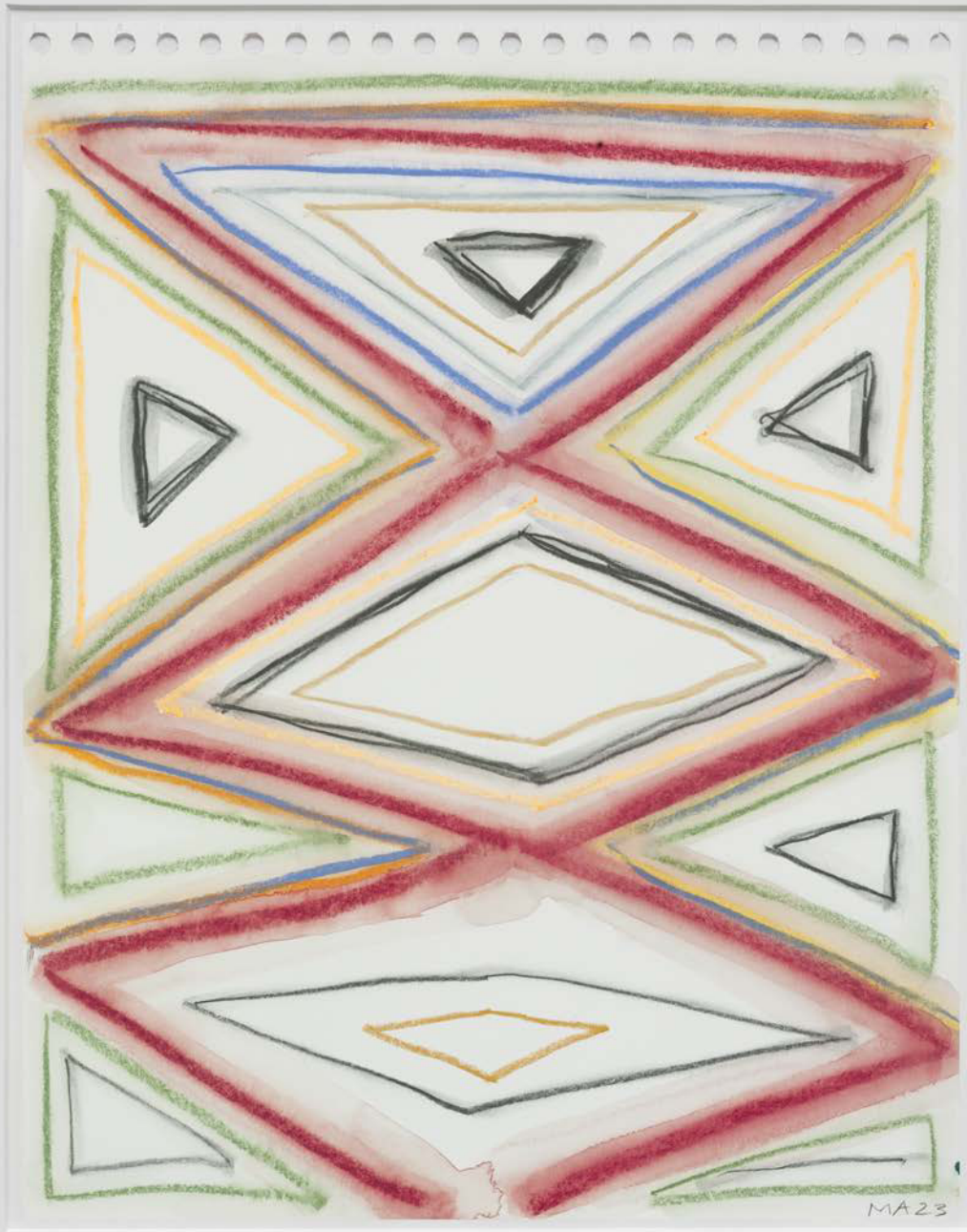


Crayon Drawing 8, 2022

Crayon on paper

35.5 × 28 cm | 14 × 11 in

Framed: 49 × 41 × 3 cm | 19 1/4 × 16 1/8 × 1 1/8 in ^{not}_{def}



Crayon Drawing 12, 2022

Crayon on paper

35.5 × 28 cm | 14 × 11 in

Framed: 49 × 41 × 3 cm | 19 1/4 × 16 1/8 × 1 1/8 in ^{not}_{def}

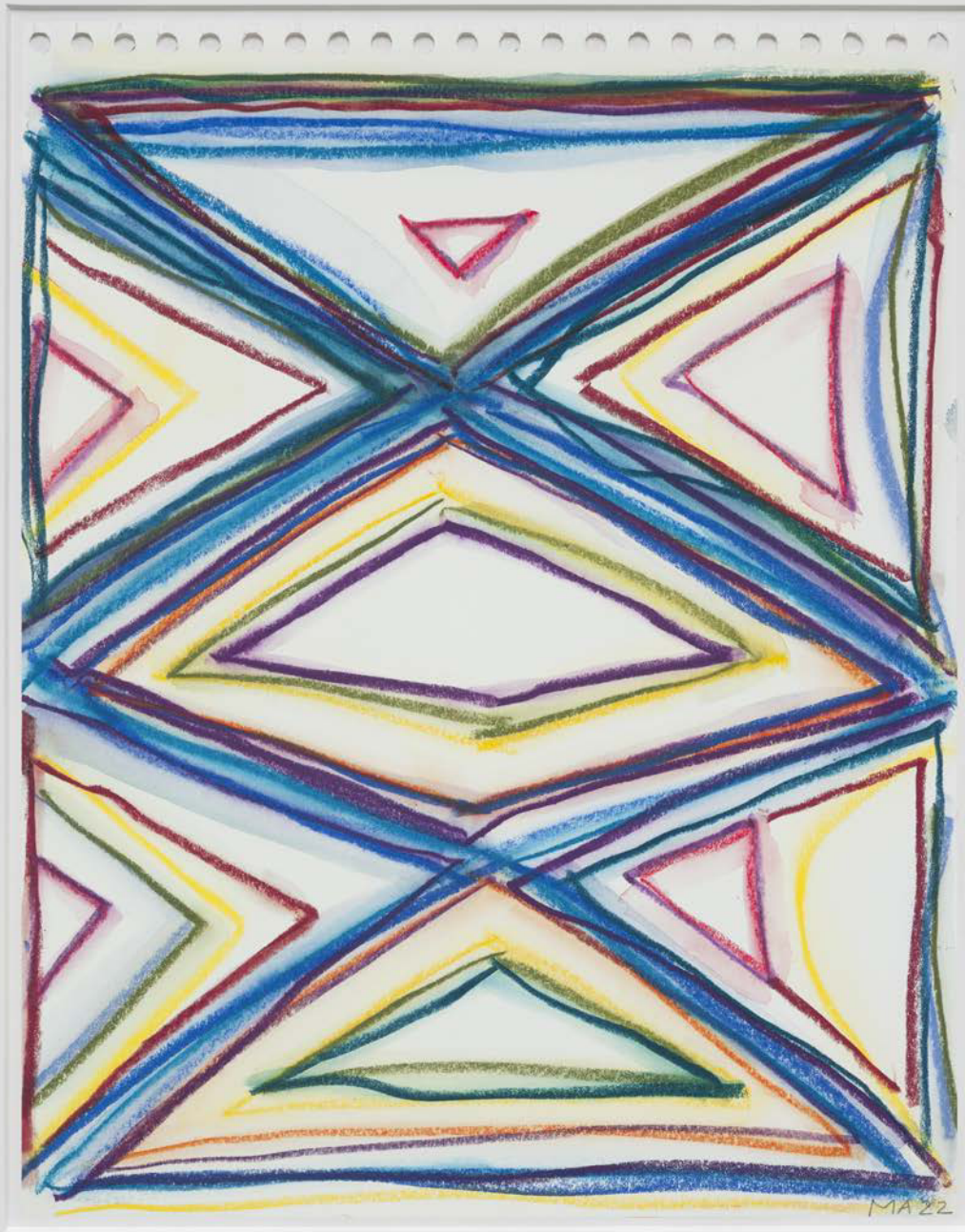


Crayon Drawing 11, 2022

Crayon on paper

35.5 × 28 cm | 14 × 11 in

Framed: 49 × 41 × 3 cm | 19 1/4 × 16 1/8 × 1 1/8 in ^{not}_{def}



Crayon Drawing 9, 2022

Crayon on paper

35.5 × 28 cm | 14 × 11 in

Framed: 49 × 41 × 3 cm | 19 1/4 × 16 1/8 × 1 1/8 in ^{not}_{def}



Crayon Drawing 17, 2022

Crayon on paper

35.5 × 28 cm | 14 × 11 in

Framed: 49 × 41 × 3 cm | 19 1/4 × 16 1/8 × 1 1/8 in ^{not}_{def}



ABOUT THE ARTIST

Marina Adams, born 1960 in New Jersey, earned degrees from Tyler School of Art, Temple University, Philadelphia, PA and Columbia University, New York, NY. She is the recipient of the John Simon Guggenheim Memorial Fellowship (2016) and the Award of Merit Medal for Painting from the American Academy of Arts and Letters (2018). Adams has participated in various solo and group exhibitions, including the Longlati Foundation, Shanghai (2023), the Parrish Art Museum, Water Mill, NY (2021), Modern Art Museum, Fort Worth (2020), Camden Arts Centre, London, UK (2016), and CUE Art Foundation (2008). Marina Adams' work is in the collections of the MoMA, New York, the Modern Art Museum of Fort Worth, Texas, the Metropolitan Museum of Art, New York, and the Longlati Foundation, Shanghai. She lives and works in New York, Bridgehampton, Long Island, and Parma, Italy.

CONTACT

GALERIE THOMAS SCHULTE
CHARLOTTENSTRASSE 24
10117 BERLIN
FON: +49 (0)30 2060 8990
FAX: +49 (0)30 2060 89910
MAIL@GALERIETHOMASSCHULTE.DE
WWW.GALERIETHOMASSCHULTE.DE

FOR CHINESE INQUIRIES PLEASE CONTACT
YINGCHI CHEN
+86 (0) 15560520158
YINGCHI.CHEN@HUA-INTERNATIONAL.COM

XIAOCHAN HUA
+86 (136) 9136 5327
XIAOCHAN.HUA@HUA-INTERNATIONAL.COM

FOR ALL OTHER INQUIRIES PLEASE CONTACT

GONZALO ALARCÓN
+49 (173) 66 46 623
GONZALO@GALERIETHOMASSCHULTE.DE

CARLOTA IBANEZ DE ALDECOA
+49 (173) 32 89 162
CARLOTA@GALERIETHOMASSCHULTE.DE

DOROTTYA BALLA
+49 (152) 51 64 27 05
DOROTTYA@GALERIETHOMASSCHULTE.DE

© 2023 the artist and Galerie Thomas Schulte

This dossier was published on the occasion of the 10th edition of West Bund Art & Design, Shanghai, 2023.

Please note that all information in this preview can be subject to changes.

**GALERIE
THOMAS
SCHULTE**